



noatum ports

SAFAGA TERMINAL

The Future of Trade
in the Red Sea

#EnablingTrade



A New Era of Trade & Logistics

Welcome to Noatum Ports Safaga Terminal, a world-class gateway for trade in the Red Sea.

Developed by AD Ports Group, a state-of-the-art facility designed to enhance supply chain and boost regional and international trade of Egypt.

With a strategic location, cutting-edge infrastructure, and a strong commercial network, Noatum Ports Safaga Terminal is set to become the preferred hub for cargo movement between Egypt, Africa, the Middle East, and Asia.

Prime Location on the Red Sea

- **Direct access** to major global shipping routes connecting Asia, Europe, and Africa.
- **Proximity** to Egypt's industrial and economic zones for seamless inland connectivity.
- **Well-integrated** with road and rail networks, reducing transit costs and time.

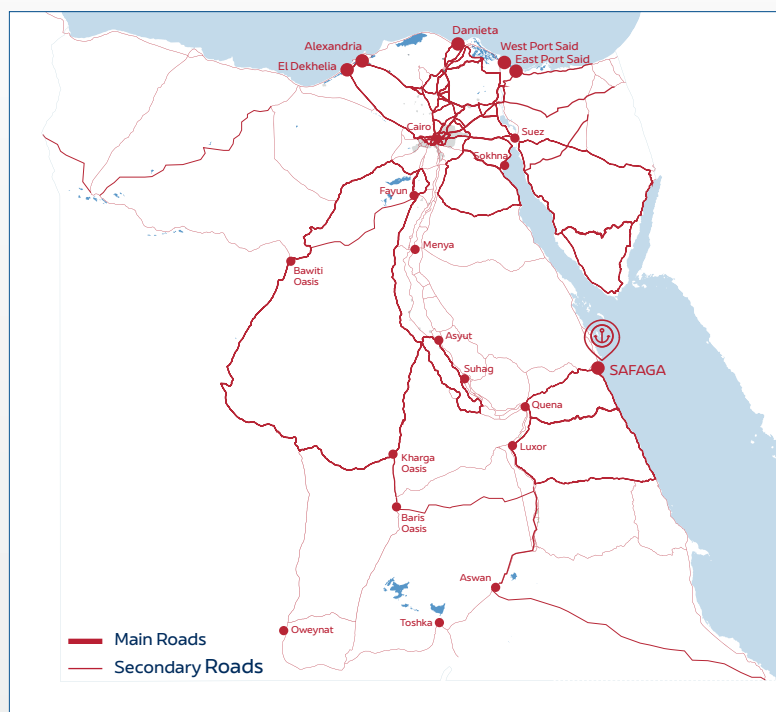


Competitive Advantages

- **Multipurpose capabilities:** Handles containers, bulk, breakbulk, general cargo, and Ro-Ro.
- **State-of-the-art technology** for efficient cargo - handling, and reduced turnaround time.
- **Deepwater access** with an 18-meter draft, allowing to accommodate large vessels.
- **Sustainability-focused operations** with eco-friendly initiatives.

Accessibility

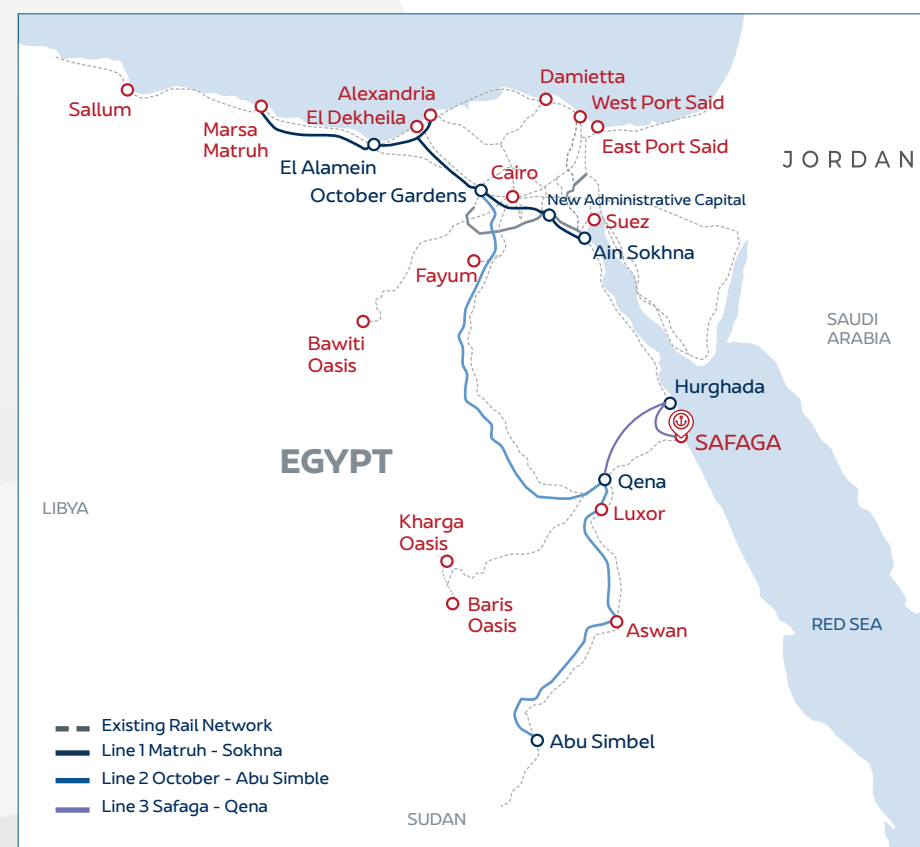
Road



Industrial/Urban Centre	Safaga	Sokhna
Qena	165 Km	552 Km
Suhag	319 Km	633 Km
Asyut	342 Km	470 Km
Minya	452 Km	371 Km
Aswan	493 Km	877 Km
Toshka	690 Km	1,159 Km
Owienat	816 Km	1,175 Km

Rail

Safaga is connected to existing national freight rail network by a 176 Km commercial rail line and is the start point of the planeed “Line 3” high speed rail, connecting Egypt’s main urban and industrial areas between the Red Sea and the Mediterranean by a 120 Km/hour cargo trains.



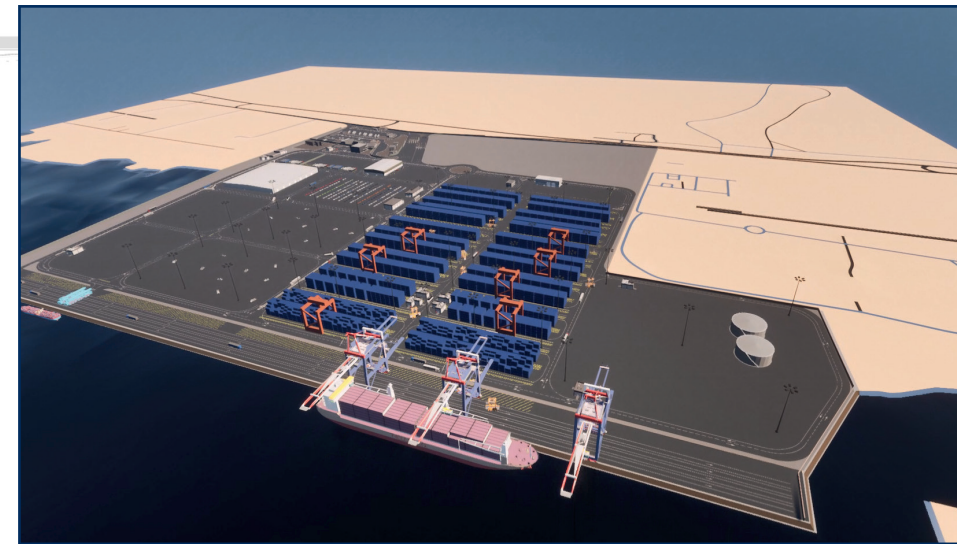
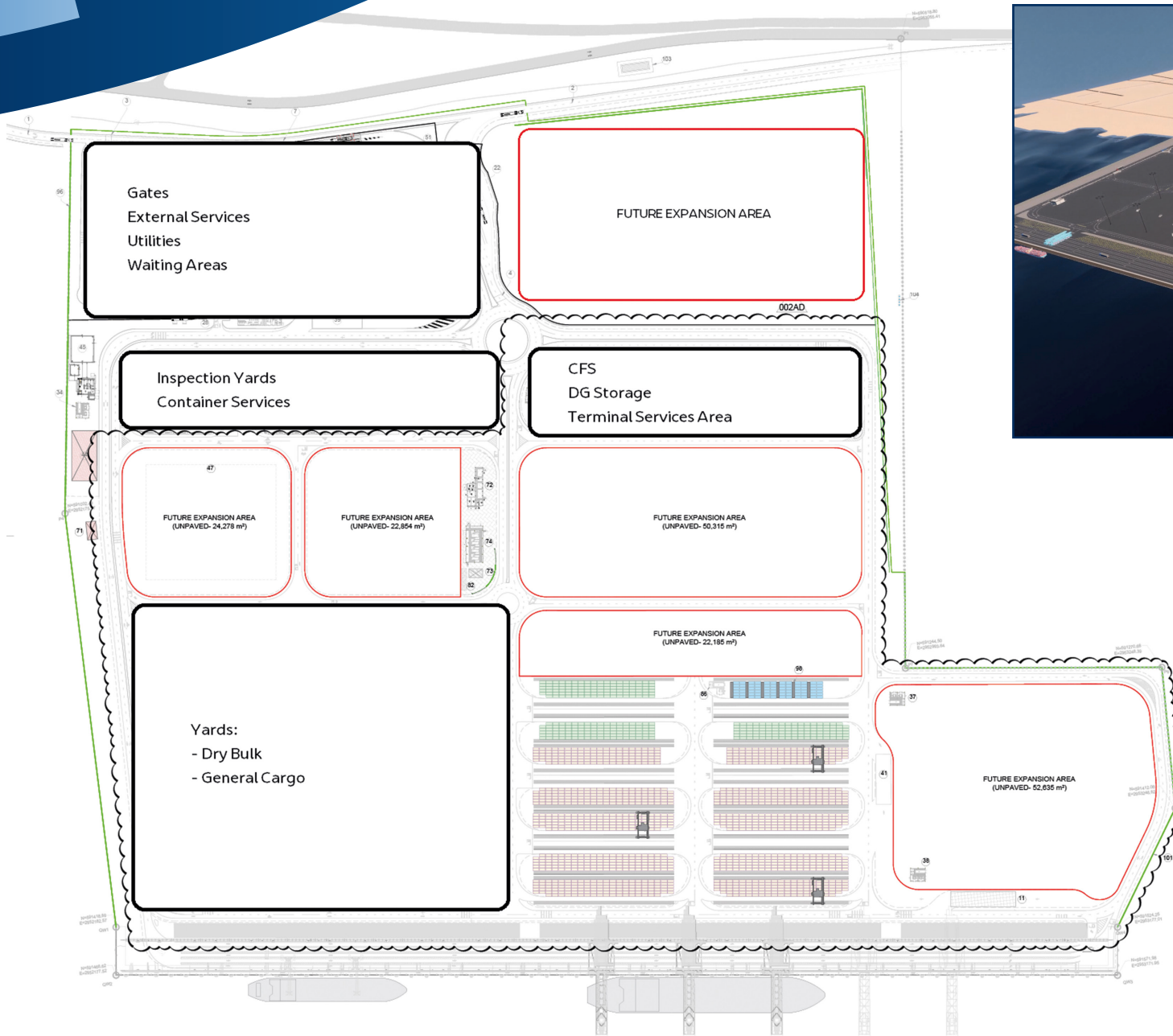
Accessibility and connectivity

Noatum Ports Safaga Terminal is the first modern terminal to serve Upper Egypt international trade.



Strategically located on the Red Sea, our terminal in Egypt serves as a vital hub, facilitating seamless connections globally. This prime location not only enhances trade routes but also ensures efficient and swift maritime logistics across these key regions.

Our facilities



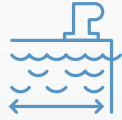
Noatum Ports Safaga Terminal is committed to delivering world-class service to shipping lines, exporters, importers, and logistics providers.

Join us in shaping the future of trade in the Red Sea region

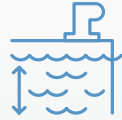
Terminals Specifications & Facilities



Total Area
810,000 sqm



Quay Length
1,000 meters



Depth Along Quay
- 18 meters

Handling Capacity per Annum



Containers
500,000 TEUs



Dry Bulk
5 M Tons



Ro-Ro
50,000 CEU

Equipment



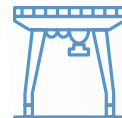
Ship-to-Shore
Cranes

3 Super-Post-Panamax
23 rows across
44m air-draft above quay



Mobile Harbor
Cranes

2
(80-Ton lifting
capacity)



RTGCs

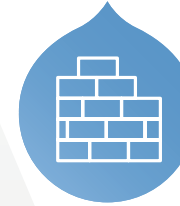
6 hybrid
6+1 height

Serving Key Industries & Market Segments



MINERALS &
MINING

CONSTRUCTION &
INFRASTRUCTURE



AUTOMOTIVE
& MACHINERY



AGRICULTURE
& FOOD SUPPLY



RETAIL &
CONSUMER GOODS

Connectivity & Logistics Solutions

- **Seamless access** to major roads and rail networks, ensuring fast inland cargo movement.
- **Integrated logistics solutions** to enhance supply chain efficiency.
- **On-site storage and warehousing** facilities for short- and long-term cargo handling.



noatum ports

SAFAGA TERMINAL

For business inquires and partnership opportunities, please contact:

Tamer Kosber - Project Implementation Director

Email: tamer.kosber@adports.ae

Mobile: +20 100 5058 318

Ali Sayed Ahmed - Commercial Manager

Email: alisayed.ahmed@adports.ae

Mobile: +20 106 5503 108